

S3 PLATFORM

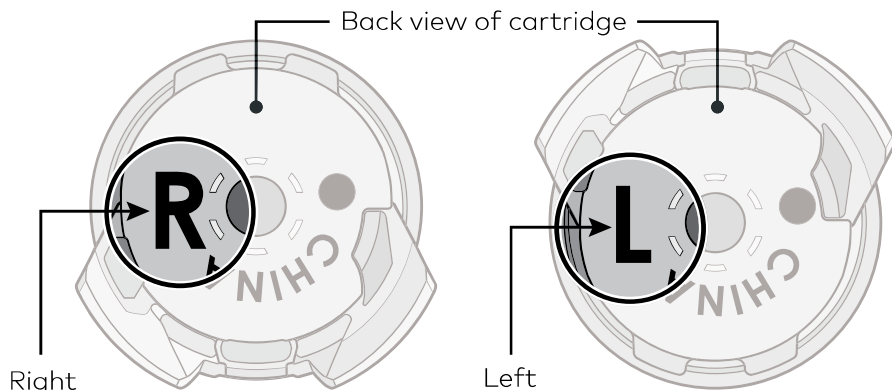
Dial Attachment Non-Looped

LACE & DIAL
ASSEMBLY

S
S-SERIES

DIAL ATTACHMENT

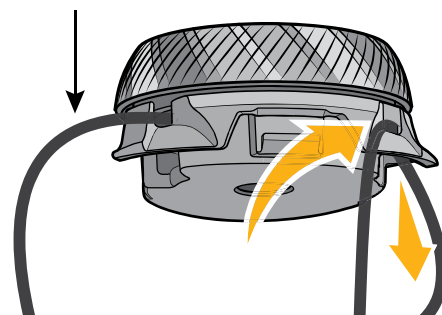
1 Verify correct cartridge



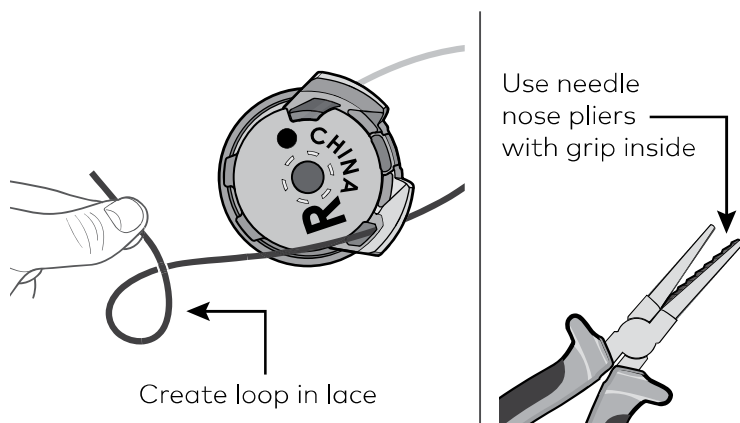
Cartridge must match shoe

2 Insert lace end through open side on reel

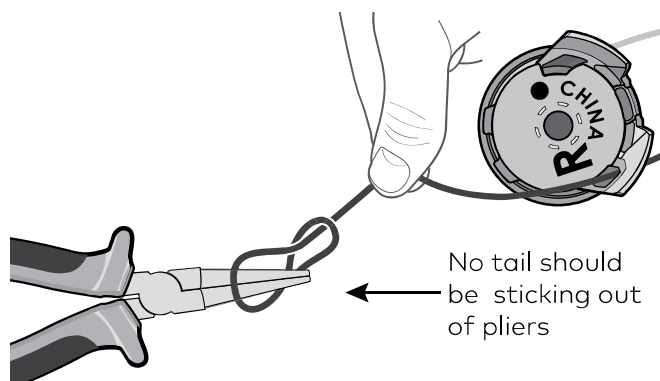
Ensure lace is completely routed through configuration



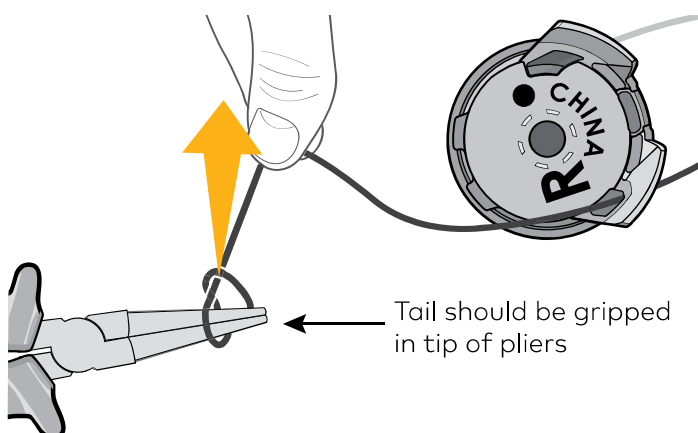
3a Tie single overhand knot using pliers



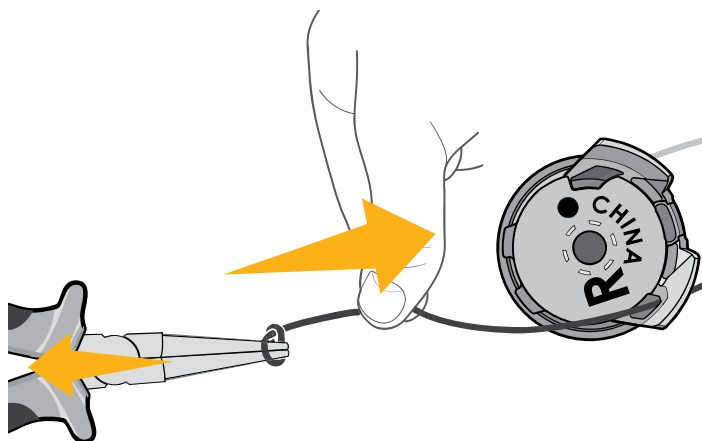
3b Grab lace end with pliers through lace loop



3c Tighten knot around pliers



3d Pull knot off tip of pliers



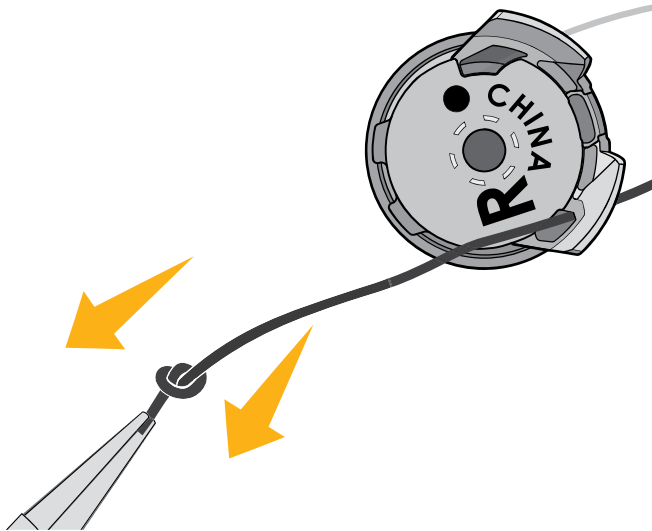
S3 PLATFORM

Dial Attachment Non-Looped

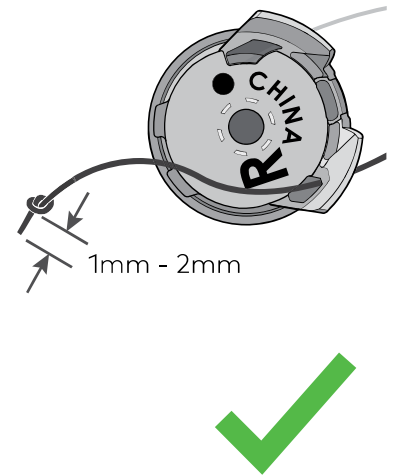
LACE & DIAL
ASSEMBLY

S
S-SERIES

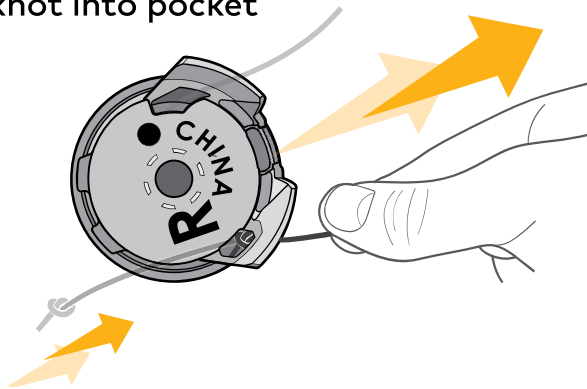
4 Ensure knot is set



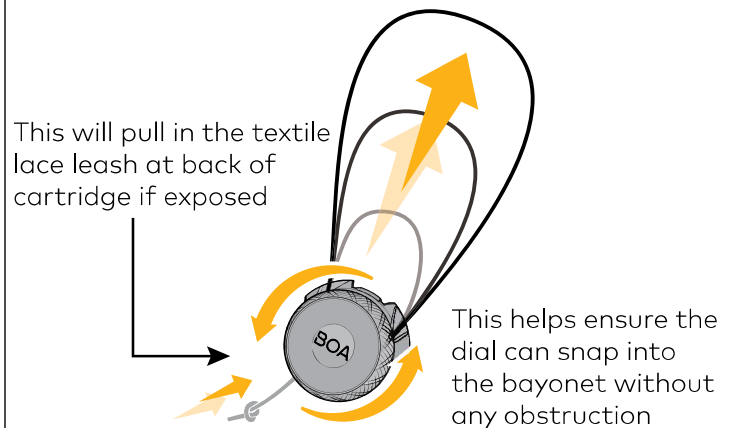
5 Trim lace tail



6 Pull lace to set knot into pocket



7 Turn dial to eject all lace



8 Snap cartridge into bayonet

